

Donat Laflèche Municipal Drain Proposed Partial Realignment

Minor Improvement

Section 78(5) Report

Presented by Monica Shade, P. Eng.

Overview

Purpose of Meeting

Brief History

Section 78 (5) of the Drainage Act

Summary of the Engineer's Report

Next Steps

Purpose of Meeting


- ▶ Engineer to present report;
- ▶ Council or initiating landowner may request changes or ask questions;
- ▶ Council may present a provisional by-law to adopt the report.

Drain History

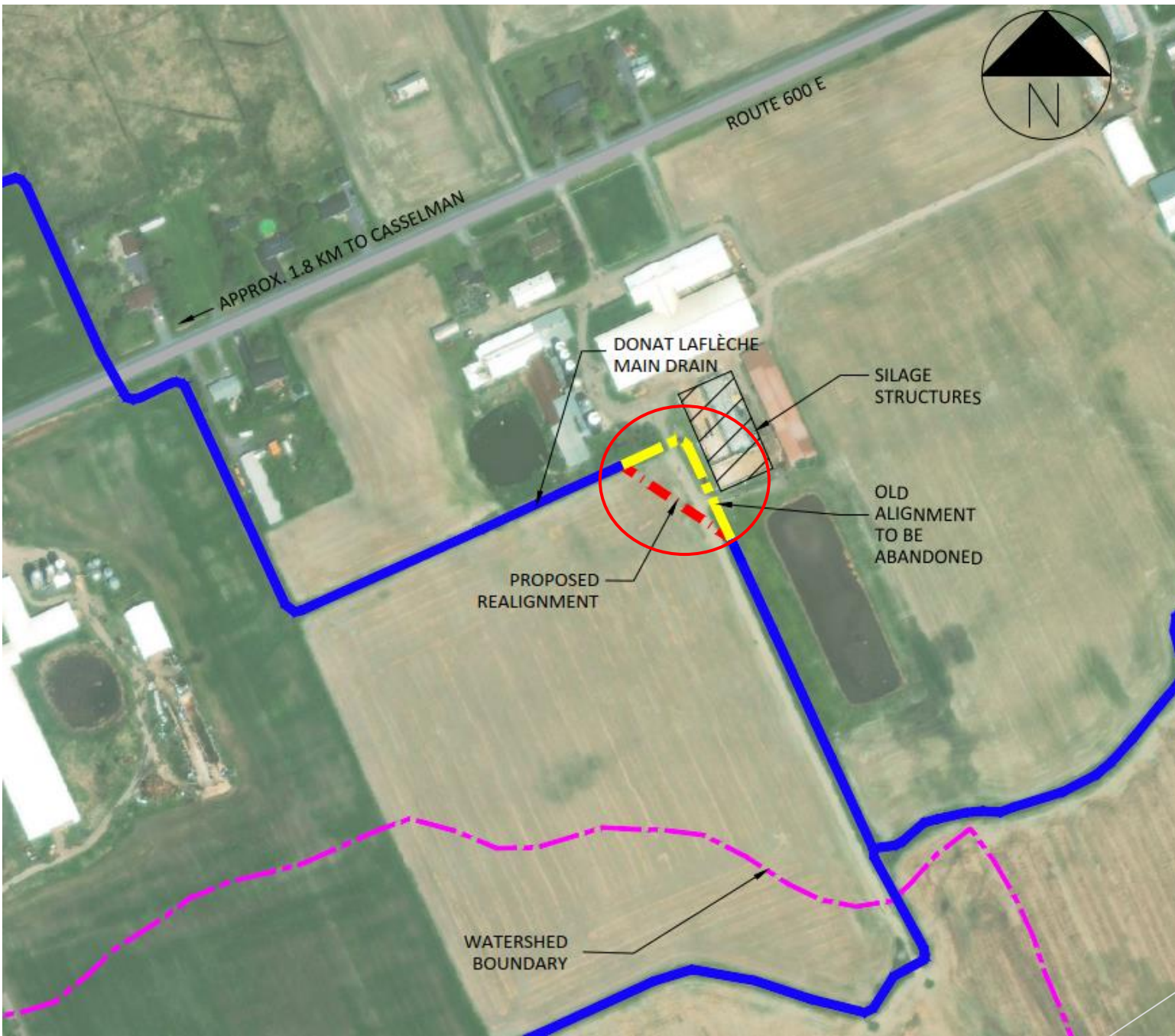
Last Updated in 1983



Drain Serves Part of Lots 4 through 8,
Concessions 6 and 7, Geographic Township of
Cambridge



Requested Realignment -
From +/- Station 1+803 to +/- Station 1+938



Section 78(5) Conformance

The activity....

- ▶ takes place on an individual property;
- ▶ project costs are the responsibility of the person initiating or the municipality (or both);
- ▶ Does not require construction access across neighbouring lands;
- ▶ will not result in any changes to the way in which future repair and maintenance costs are allocated to other property owners in the watershed;
- ▶ does not change the drainage capacity or erosion capacity;
- ▶ does not result in an enclosure;
- ▶ does not take place within wetlands.

Engineer's Report (S. 78(5))

Drain History

Conformance with 78(5) conditions

Design considerations (capacity & erosion)

Abandonment of existing alignment

Future maintenance

Summary of costs


Permitting

- ▶ The project was circulated to both:
 - ▶ Department of Fisheries and Oceans (DFO)
 - ▶ South Nation Conservation Authority (SNCA)



Next Steps

Council gives property owner and prescribed persons the opportunity to provide input;



Council decides if the project should proceed;



Council provisionally adopts the Engineer's Report;



Clerk circulates the provisional by-law and notice of process to appeal to referee to initiating property owner and OMAFRA;



Project proceeds to construction.

Question Period

The background features a dark, textured surface with numerous 3D question marks in shades of grey and black. The scene is overlaid with vibrant green geometric shapes, including a large white triangle on the left and several overlapping translucent green polygons on the right. A thin white line runs diagonally across the bottom right corner.